

Aloxxi[®]
SALON COLOR & CARE

ULTRA HOT[™]

INTENSE SEMI-PERMANENT FASHION COLOUR

SWATCH CHART



ULTRA HOT™

INTENSE SEMI-PERMANENT FASHION COLOUR

7 intermixable shades offer endless possibilities.
Advanced Direct Dye Technology binds to the hair for
more even color results that fade on tone.



RED
ROSSINI RED™



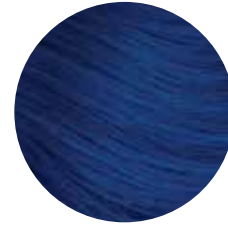
PINK
PINK PALAZZO™



YELLOW
LIMONCELLO YELLOW™



GREEN
VERDE PARADISO™



BLUE
MIDNIGHT IN MILAN™



VIOLET
LA DOLCE VIOLET™



CLEAR
ITALIAN ICE™

INSTRUCTIONS FOR USE: NO DEVELOPER REQUIRED.

PRE-TREATMENT: Apply Aloxxi ColourPrime Pre-Color Treatment to the hair prior to all color applications to cleanse, equalize porosity and protect the scalp. This 3-in-1 color extender delivers 2.5x more even color absorption than untreated hair to optimize color retention.

APPLICATION & DEVELOPMENT TIME:

COLOR OBJECTIVE	APPLICATION	DEVELOPMENT TIME 🕒
For intense fashionable color	Pre-lighten hair to pale yellow prior to applying the desired ULTRA HOT shade. Apply the ULTRA HOT shade directly onto damp hair.	10 to 20 minutes depending on the intensity of the desired color result.
Pastel colors	Pre-lighten hair to pale yellow prior to applying the desired ULTRA HOT shade. Mix the desired ULTRA HOT color with ULTRA HOT Clear. Apply the ULTRA HOT mix directly onto damp hair.	10 to 20 minutes. Check color results frequently until desired intensity is achieved.
Shine intensifier on natural or color treated hair	Apply ULTRA HOT directly onto damp hair.	10 to 40 minutes. Check color results every 10 minutes until desired shine is achieved.

REMOVAL & POST TREATMENT: Upon completion of development time, emulsify and rinse hair thoroughly with tepid water. Apply ColourLock Post-Color Finisher to cleanse and condition the hair and close the cuticle. Leave on for 2 minutes and then rinse. Follow with your choice of Aloxxi products.

TIP:

Control the intensity of each shade using ULTRA HOT Clear as a mixer

WHIMSICAL COLOR MIXES

Soften the mood with these formulas that melt ULTRA HOT shades into playful hues. These easy to mix shades help expand your options to add spark to your clients' Color Personality.



30g CLEAR ITALIAN ICE + 2g GREEN VERDE PARADISO = 

30g CLEAR ITALIAN ICE + 1g VIOLET LA DOLCE VIOLET = 

20g PINK PINK PALAZZO + 10g CLEAR ITALIAN ICE + 10g YELLOW LIMONCELLO YELLOW = 

30g YELLOW LIMONCELLO YELLOW + 10g PINK PINK PALAZZO = 

30g CLEAR ITALIAN ICE + 1g GREEN VERDE PARADISO + 1g BLUE MIDNIGHT IN MILAN = 

30g CLEAR ITALIAN ICE + 1g PINK PINK PALAZZO = 

15g CLEAR ITALIAN ICE + 15g PINK PINK PALAZZO = 

30g CLEAR ITALIAN ICE + 1g BLUE MIDNIGHT IN MILAN = 

30g PINK PINK PALAZZO + 10g VIOLET LA DOLCE VIOLET = 

20g RED ROSSINI RED + 1g VIOLET LA DOLCE VIOLET = 



LIGHTENER CREATE LUMINOUS BLONDE TONES

PRE-TREATMENT


Apply ColourPrime Pre-Color Treatment to hair prior to application to equalize hair's porosity and help to ensure even results, cleanse hair, and help prevent scalp irritation. It is not recommended to stimulate scalp prior to a lightening service.

POWDER LIGHTENER

WHEN TO USE

- To decolorize natural or artificial color
- On or off-scalp applications
- Pre-lighten hair prior to application of ULTRA HOT



LIGHTENER	LEVELS OF LIFT	ALOXXI H ₂ O ₂ CREME DEVELOPER	MIXING	DEVELOPMENT TIME 
WHITE/BLUE	UP TO 7 LEVELS	ON-SCALP: 7, 10, or 20 Volume OFF-SCALP: 7,10,20,30 or 40 Volume	ON-SCALP: 1:2 to 1:3 OFF-SCALP: 1:1 to 1:3	up to 50 minutes
ULTRA	UP TO 9 LEVELS	ON-SCALP: 20 Volume OFF-SCALP: 20 or 30 Volume	ON-SCALP: 1:2 OFF-SCALP: 1:1.5 to 1:2.5	up to 55 minutes

QUICK LIFT LIGHTENER

WHEN TO USE

- To lift up to 5 levels in 15 minutes
- Off- scalp application techniques

DEVELOPER

40 Volume

MIXING

Mix 1 packette (24g) Boosting Powder with ¼ tube (15g) Ammonia-Free Lifting Cream and 30g H₂O₂ Creme Developer 40 Vol. Blend until smooth and creamy. Apply immediately after mixing to unwashed hair. DO NOT APPLY TO SCALP. Apply in small sections.

DEVELOPMENT TIME

- 15 minutes with low heat
- Up to 35 minutes without heat



REMOVAL & POST TREATMENT

Rinse hair thoroughly with tepid water. Apply ColourLock Post-Color Finisher to cleanse and condition hair, close the cuticle and neutralize residual H₂O₂. Leave on for two minutes. Rinse.

ALOXXI PROFESSIONAL PRODUCTS

Aloxxi offers a complete collection of easy-to-use, high-performance products to support your artistic needs.

COLOR



CHROMA[®] Permanent Creme Colour



Good color starts with good condition. Aloxxi CHROMA Permanent Creme Colour ensures that hair remains gorgeous during and after the coloring process. CHROMA features CDP COMPLEX to deliver complete coverage, moisturizing conditioners and brilliant shine into every strand.



TONES[®] Demi-Permanent Colour



TONES[®] is the perfect complement to Aloxxi's CHROMA[®] Permanent Creme Colour. Formulated with CDP Complex to Condition, Deposit color and Protect the hair. This high-definition color ensures 100% saturation and healthy, shiny hair.



DIMENSIONS[®] Highlighting Colour



Create beautiful, vibrant fashion highlights in one step. Offering 1-STEP LIFT AND DEPOSIT on natural and color treated hair, proprietary CDP Complex[®] conditions hair while depositing and protecting color. Each shade is infused with Illipe Butter to improve manageability and provide superior shine while anti-oxidant rich Sunflower Seed Extract helps protect color from damaging UV rays.



ULTRA HOT[®] Intense Semi-Permanent Fashion Colour

ULTRA HOT[™] Intense Semi-Permanent Fashion Colour delivers a vibrant palette of shades with incredible shine. Formulated with Advanced Direct Dye Technology for more even color results that fade on tone. All colors can be intermixed for easy customization.

COLOR SUPPORT



LIGHTENERS

Create beautiful blondes with Aloxxi LIGHTENERS. Olive Oil protects the integrity of the hair, improves combability and retains moisture in the hair while lightening. Aloxxi WHITE LIGHTENER creates natural tones, while Aloxxi BLUE LIGHTENER controls unwanted warm tones when lifting. Aloxxi ULTRA LIGHTENER lifts up to 9 levels and Quick Lift LIGHTENER lifts up to 5 levels in 15 minutes.



BLUE DEVELOPER

Provides maximum control of unwanted warmth when lightening.



COLOURPRIME PRE-COLOR TREATMENT & COLOURLOCK POST-COLOR FINISHER

Extend the life of your color with these botanically enriched treatments. Begin your service with this gentle herbal cleanser to protect the scalp and equalize porosity; and end your treatment with this finisher that cleanses, conditions, reduces hair's pH, closes the cuticle and neutralizes residual peroxide after any hair color service.



BARRIER CREME

Protects the skin from staining and irritation when applied before color service.



RRx TREATMENT 2-STEP PROFESSIONAL SYSTEM

Repair and replenish damaged hair. This treatment is the only prescription you need to strengthen and smooth dry, brittle strands. Clinically proven to significantly improve hair strength for healthy hair with movement after one use.

FULL SPECTRUM COLOR TECHNIQUE



Color Personality: ESPRESSO YOURSELF®
 Natural Level: 4 Texture: Fine Porosity: Porous

Lightener Formula: Ultra LIGHTENER with 20 Vol. Developer

Formula **A** : TONES 4N + 5GV with 7 Vol. Activator

Formula **B** : ULTRA HOT Green

Formula **C** : ULTRA HOT Blue

Formula **D** : ULTRA HOT Violet

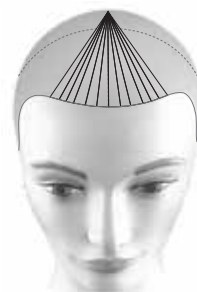
Formula **E** : ULTRA HOT Pink

Aloxxi®
 SALON COLOR & CARE



Step 1

Apply ColourPrime Pre-Color Treatment. Place slices in a horseshoe around the head from one side to the other, leaving out the front hairline. Place a couple horizontal slices in the nape area. Feather application of Ultra LIGHTENER 2 inches away from the scalp in slices.



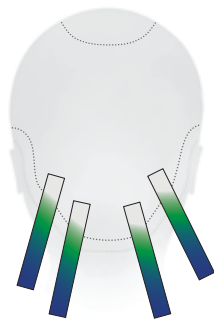
Step 2

Create a triangle section in the fringe area. Feather application of Ultra LIGHTENER ½ inch away from the scalp in pivoting slices. Pre-lighten all slices to a pale yellow. Rinse and apply ColourLock Post-Color Finisher.



Step 3

Starting in the fringe triangle, place 3 back-to-back slices of Formula D. Next, place alternating slices of Formula B and C. Finish triangle with 3 back-to-back slices of Formula D.



Step 4

In nape pre-lightened sections, apply Formula B. Then feather in Formula C on the ends.



Step 5

Starting on the right side of the horseshoe pre-lightened section, apply Formula D then feather in Formula E. On the next slice, apply Formula C and feather in Formula B. Repeat through to the left side. Apply Formula A to all remaining hair.



Step 6

Develop, then rinse thoroughly and apply ColourLock Post-Color Finisher.

