

Aloxxi[®]
SALON COLOR & CARE

ANDIAMO[™]

EXPRESS PERMANENT COLOUR with **TURBO DYE**
TECHNOLOGY[®]

SWATCH CHART

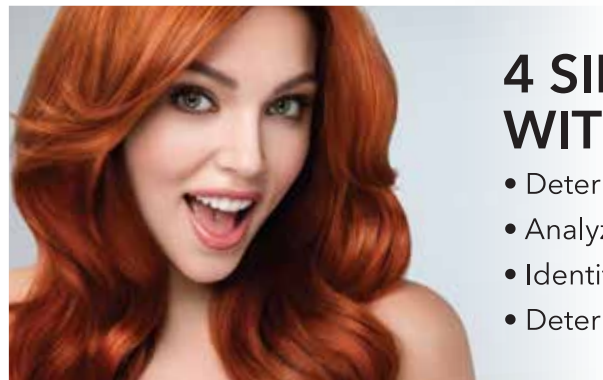
ANDIAMO™

EXPRESS PERMANENT COLOUR

with **TURBO DYE**
TECHNOLOGY®

	NEUTRAL	ASH	EXTRA RED	COPPER	GOLD
	This neutral base contains all three primary colors in varied proportions. It is used to determine natural level & is recommended to be mixed with fashion shades to achieve 100% grey/white coverage.	Blue base controls unwanted warm tones.	Intense red base creates extremely rich red tones.	Orange base enhances and accentuates warm tones.	Gold base creates brilliant golden tones.
HIGH LIFT <small>Formulated to achieve the ultimate in high lift blondes without creating excessive warmth.</small>	11N 11.0  TUSCAN SUNLIGHT	11A 11.1  LOST IN LUCCA			
10					
9	9N 9.0  LA DOLCE DIVA	9A 9.1  STEELING BEAUTY			
8	8N 8.0  SPLASH OF MODA				
7		7A 7.1  RAPHAEL'S ANGEL		7C 7.4  BAROQUE HIS HEART	7G 7.3  CARAMEL CREMA
6	6N 6.0  TOSCANA'S TREAT				
5			5XR 5.66  VAMPY VALENTINO		
4	4N 4.0  NERO TO MY HEART				
3					
2	2N 2.0  HAUTE CIOCCOLATO				





4 SIMPLE STEPS TO HAIR COLOR WITH ALOXXI ANDIAMO™

- Determine natural level and/or existing color including % of grey/white hair
- Analyze texture and porosity
- Identify desired level and tonal direction
- Determine color objective to select developer mixing ratio and timing



PRE TREATMENT:

Apply Aloxxi ColourPrime Pre-Color Treatment to the hair prior to all color applications to optimize color retention.




1 : 1



MIXING:

Mix 1 part Aloxxi ANDIAMO™ to 1 part Aloxxi H₂O₂ Creme Developer in a plastic or glass bowl.

DEVELOPER AND TIMING CHART:

COLOR OBJECTIVE	DEVELOPER	DEVELOPMENT TIME 
GREY/WHITE COVERAGE - TONE ON TONE	10 VOLUME (3%)	10 minutes and up to 15 minutes
GREY/WHITE COVERAGE - 1 LEVEL OF LIFT	20 VOLUME (6%)	10 minutes and up to 15 minutes
GREY/WHITE COVERAGE - 2 LEVELS OF LIFT	30 VOLUME (9%)	10 minutes and up to 15 minutes
GREY/WHITE COVERAGE - 3 LEVELS OF LIFT (UP TO 4 LEVELS WITH High Lift Shades)	40 VOLUME (12%)	10 minutes and up to 15 minutes

Fine hair is more receptive to hair color therefore less development time may be required. **DO NOT DEVELOP WITH HEAT.**

HIGH LIFT SHADES (11N & 11A):

Formulated to achieve up to 4 levels of lift in 10-15 minutes



POST TREATMENT:

Upon completion of development time, emulsify & rinse hair thoroughly with tepid water. Apply ColourLock Post-Color Finisher to cleanse and condition the hair and close the cuticle. Leave on for 2 minutes and then rinse. Follow with your choice of Aloxxi products.

RETOUCH:

Apply Aloxxi ANDIAMO to new growth area (base). Develop for 10-15 minutes. Aloxxi TONES® Demi-Permanent Color is recommended to refresh previously colored mid-lengths and ends.

ANDIAMO™ QUICK MIXES

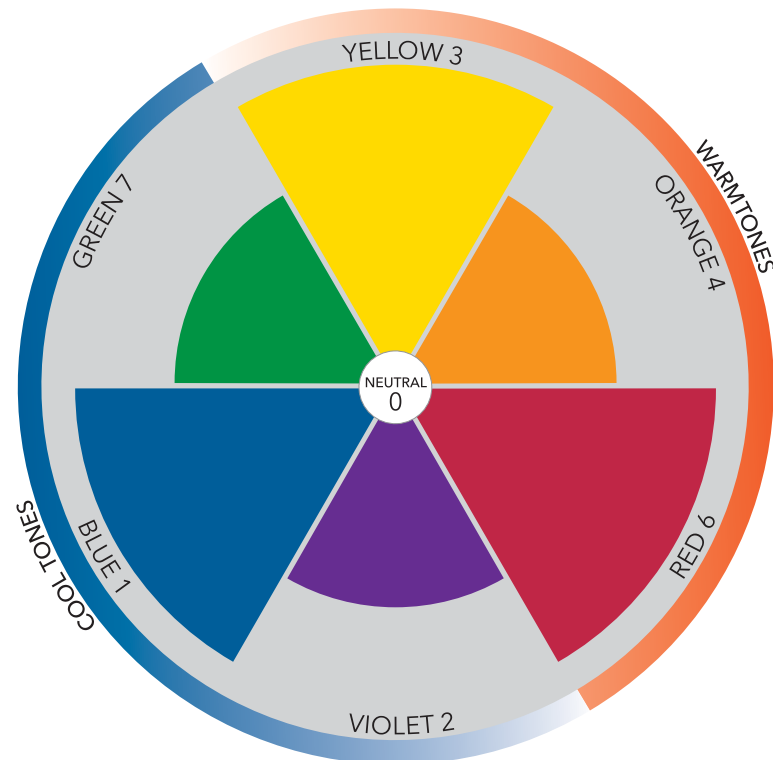
Create additional shades with these recommended formulas.

$$\begin{array}{c}
 \begin{array}{|c|} \hline 1\text{pt} \\ \hline 9\text{N} \\ \hline \end{array}^{9.0} + \begin{array}{|c|} \hline 1\text{pt} \\ \hline 9\text{A} \\ \hline \end{array}^{9.1} = \begin{array}{|c|} \hline 9\text{NA} \\ \hline \end{array}^{9.01} \\
 \text{LA DOLCE DIVA} \quad \text{STEELING BEAUTY} \\
 \\
 \begin{array}{|c|} \hline 1\text{pt} \\ \hline 7\text{C} \\ \hline \end{array}^{7.4} + \begin{array}{|c|} \hline 1\text{pt} \\ \hline 7\text{G} \\ \hline \end{array}^{7.3} = \begin{array}{|c|} \hline 7\text{CG} \\ \hline \end{array}^{7.43} \\
 \text{BAROQUE HIS HEART} \quad \text{CARAMEL CREMA}
 \end{array}$$

$$\begin{array}{c}
 \begin{array}{|c|} \hline 2\text{pt} \\ \hline 8\text{N} \\ \hline \end{array}^{8.0} + \begin{array}{|c|} \hline 1\text{pt} \\ \hline 7\text{A} \\ \hline \end{array}^{7.1} + \begin{array}{|c|} \hline 1\text{pt} \\ \hline 9\text{A} \\ \hline \end{array}^{9.1} = \begin{array}{|c|} \hline 8\text{NA} \\ \hline \end{array}^{8.01} \\
 \text{SPLASH OF MODA} \quad \text{RAPHAEL'S ANGEL} \quad \text{STEELING BEAUTY} \\
 \\
 \begin{array}{|c|} \hline 2\text{pt} \\ \hline 7\text{A} \\ \hline \end{array}^{7.1} + \begin{array}{|c|} \hline 1\text{pt} \\ \hline 8\text{N} \\ \hline \end{array}^{8.0} + \begin{array}{|c|} \hline 1\text{pt} \\ \hline 6\text{N} \\ \hline \end{array}^{6.0} = \begin{array}{|c|} \hline 7\text{NA} \\ \hline \end{array}^{7.01} \\
 \text{RAPHAEL'S ANGEL} \quad \text{SPLASH OF MODA} \quad \text{TOSCANA'S TREAT}
 \end{array}$$

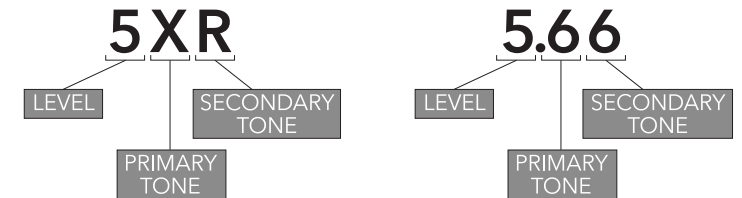
COLOR WHEEL

Colors close to each other on the wheel enhance tonal direction. Colors across the wheel neutralize tonal direction. Colors may be warm or cool depending on the proportion of the primary colors present: blue, red and yellow.



0	1	2	3	4	5	6
neutral	ash	violet	gold	copper	mahogany	red

LEVEL AND TONAL DIRECTION



NEUTRAL LEVEL AND EXPOSED CONTRIBUTING PIGMENT GUIDE

	LEVEL	NEUTRAL LEVEL	EXPOSED CONTRIBUTING PIGMENT	
LIGHT ↑ ↓ DARK	10N	LIGHTEST BLONDE	PALE YELLOW	HEALTHY HAIR Accepts warm tones: red, orange and yellow. Rejects cool tones: blue and violet.
	9N	VERY LIGHT BLONDE	LIGHT YELLOW	
	8N	LIGHT BLONDE	YELLOW	
	7N	MEDIUM BLONDE	ORANGE + YELLOW	
	6N	DARK BLONDE	ORANGE	
	5N	LIGHT BROWN	RED + ORANGE	
	4N	MEDIUM BROWN	RED	
	3N	DARK BROWN	RED	
	2N	DARKEST BROWN	RED	
	1N	BLACK	RED	
				DAMAGED HAIR Accepts cool tones: blue and violet. Rejects warm tones: red, orange and yellow.

ALOXXI PROFESSIONAL COLOUR

Enhance your ANDIAMO™ color service by retouching with TONES®

ANDIAMO™ EXPRESS PERMANENT COLOUR



with **TURBO DYE**
TECHNOLOGY®

Reduce the time it takes to get beautiful color and complete grey coverage with ANDIAMO™ Express Permanent Colour. Formulated with Turbo Dye Technology®, ANDIAMO delivers complete grey coverage in just 10 minutes.

KEY BENEFITS

- Express color service in just **10 minutes**
- Long-lasting color, vibrancy and shine
- Outstanding care and condition for healthy hair
- Achieve up to 4 levels of lift

TURBODYE TECHNOLOGY®

- Increased pigment concentration deposits a higher concentration of dyes in only **10 minutes**.
- Calibrated dye coupler formula regulates the dye oxidation pace to ensure consistent, on-point color results.
- Illipe Butter provides nourishment, shine & maneagability.

TONES® DEMI-PERMANENT COLOUR



with **CDP**
COMPLEX®

TONES® Demi-Permanent Colour is the perfect no ammonia partner to Aloxxi's ANDIAMO™ Express Permanent Colour. Formulated with CDP Complex® to Condition, Deposit color and Protect the hair. This high-definition color ensure 100% saturation and healthy, shiny hair.

CDP COMPLEX®

• CONDITIONS

Meadowfoam Seed Oil imparts an extra boost of moisture.

• DEPOSITS

High-definition crystallized micro-pigments in a demi-permanent base deliver superior deposit with no lift.

• PROTECTS

No ammonia formula helps protect against cuticle damage during the color process. Weightless emollients surround the cuticle with a protective shield.

SWITCHBACK COLOR TECHNIQUE



Color Personality: BAROQUE HIS HEART
Natural Level: 6 Texture: Fine Porosity: Normal

Formula **A** : White LIGHTENER with 20 Vol. Developer

Formula **B** : ANDIAMO 7C with 20 Vol. Developer

Formula **C** : TONES 8K + 7G with 7 Vol. Activator

Step 1



Apply ColourPrime Pre-Color Treatment.

Step 2



Place two back-to-back slices of Formula A working in a zig-zag pattern diagonally across the top.

Step 3



Apply Formula B at the base to all remaining hair. Develop, rinse and apply ColourLock Post-Color Finisher.

Step 4



Glaze with Formula C.

Step 5



Develop, then rinse thoroughly and apply ColourLock Post-Color Finisher.

Aloxxi
SALON COLOR & CARE



©2017 Aloxxi International Corporation • 14144 Ventura Blvd, Suite 110 • Los Angeles, CA 91423



aloxxi.com • **TECHNICAL HOTLINE: 1-877-425-6994** • Item #: LTADCHT17